



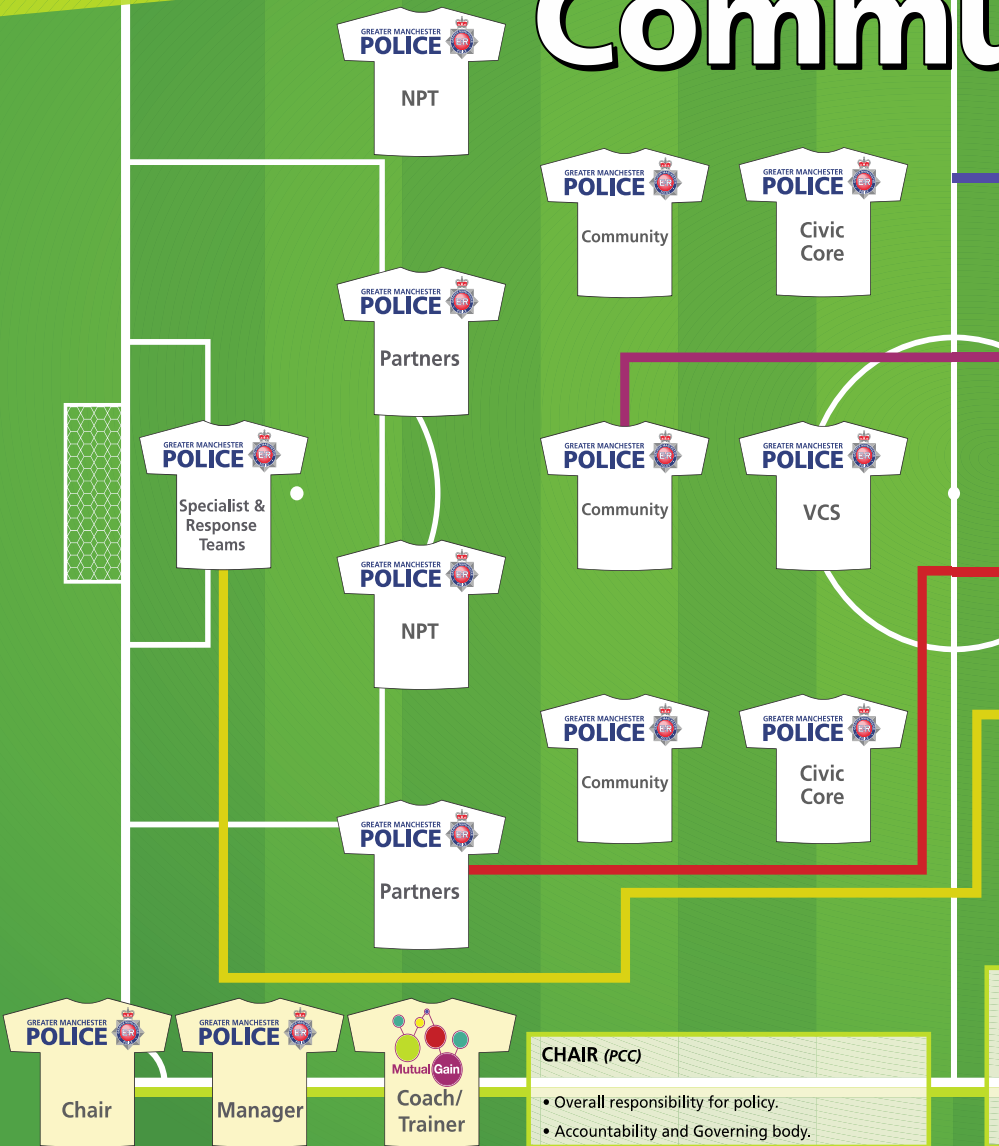
# Football and Policing Social Citizens

Susan Ritchie BA (Hons), MA (Research)  
Dr Andrew Fisher

Everyone has a role to play on and off the pitch!  
 Aim of the game is to build local social capital - networks of people who positively self police, and reduce the shape demand on statutory agencies.



# Community United



**ROLES**

**FORWARDS**

- Voluntary and Community Sector.
- Active Core Citizens, e.g. IAG, NHW, Forum Members, KINs etc.
- Role is to score goals, and create opportunities to score goals.

**MIDFIELDERS**

- Wider society including victims, volunteers, reformed offenders, and general public.
- It's often said that a game is won or lost in midfield - can dictate the game from there.
- Main duty is to maintain possession of the ball - to feed it to the strikers, and dispossess opposing players.

**DEFENDERS**

- Neighbourhood teams and their partners.
- Primary responsibility is to provide support to the team and prevent the opposition from scoring.

**GOALKEEPER**

- Wider specialist police and response officers.
- The most defensive position whose role it is to protect the goal at all costs.

**TACTICS**

1. Without a strong midfield the goalkeepers and defenders are constantly reacting and under attack without the legitimacy and confidence of the team.
2. Without an active midfield the forwards won't have their input and support to help them achieve in partnership and score the required goals and achieve desired outcomes.
3. Failure to keep possession of the ball consistently will enable the opposition to score goals and will have an impact on the overall confidence of the team.
4. Relationships matter - teams work best where the relationship between them is strong and understood. A few star players dotted around will be less effective without strong and consistent teamwork.
5. Cash can buy a few new players but unless you blend these with existing assets in the team the assets that the cash buys will be a white elephant.
6. The more successful the team the more likely you are to be able to change the formation. Teams that are struggling play five at the back, but when successful they might play less defenders and more attackers.

**MANAGER (Senior Official)**

- Responsible to the Chair (PCC).
- Responsible for running the team (*force or partnership*), and may also coach the team.
- Select the team, plan the strategy, delegate duties to coach, market the club (*internal management*).

**CHAIR (PCC)**

- Overall responsibility for policy.
- Accountability and Governing body.

**COACH/TRAINER (MutualGain, and in time local staff and residents)**

"as the game gets quicker the role of the coach can never be underestimated...coaches are essential for teaching and developing players...they must be aware of the latest techniques and philosophies involved in coaching the game".



(w) [www.mutualgain.org](http://www.mutualgain.org)

(t) 07875237846

(e) [susan@mutualgain.org](mailto:susan@mutualgain.org)

[andrew@mutualgain.org](mailto:andrew@mutualgain.org)

 [@Mutual\\_Gain](https://twitter.com/Mutual_Gain)