



Child Friendly Youth Justice

PC Chris Marshall

&

Pc Matt Guy

West Yorkshire Police



@PCMattGuy





Welcome to Leeds!



<https://youtu.be/IKS91ImLYbY?list=UUgHwMhN0T4oMRGJ6Wp9mLzQ>





Leeds - Facts and Figures

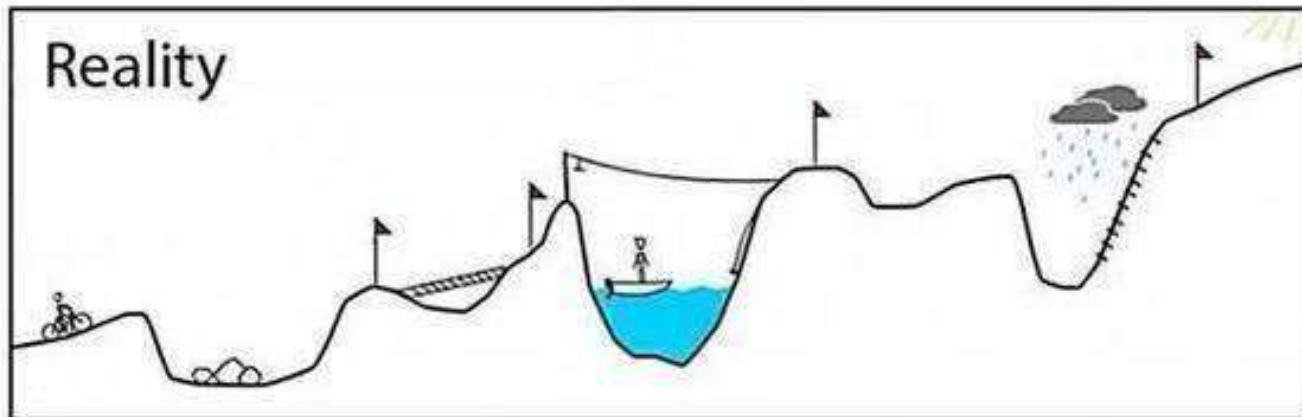
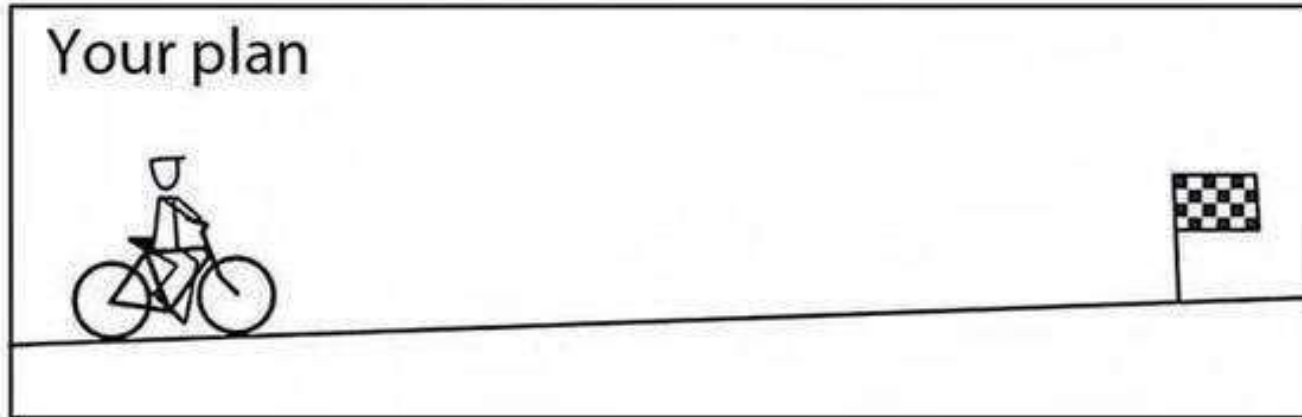


- Population of about 800,000
- About 320,000 households
- 180,000 children
- 57 Children's Centers
- 218 Primary Schools
- 36 Secondary schools
- 752 CLA aged 10-17
- 207 First Time Entrants in 2016/17
- 42 CLA @ the YOS





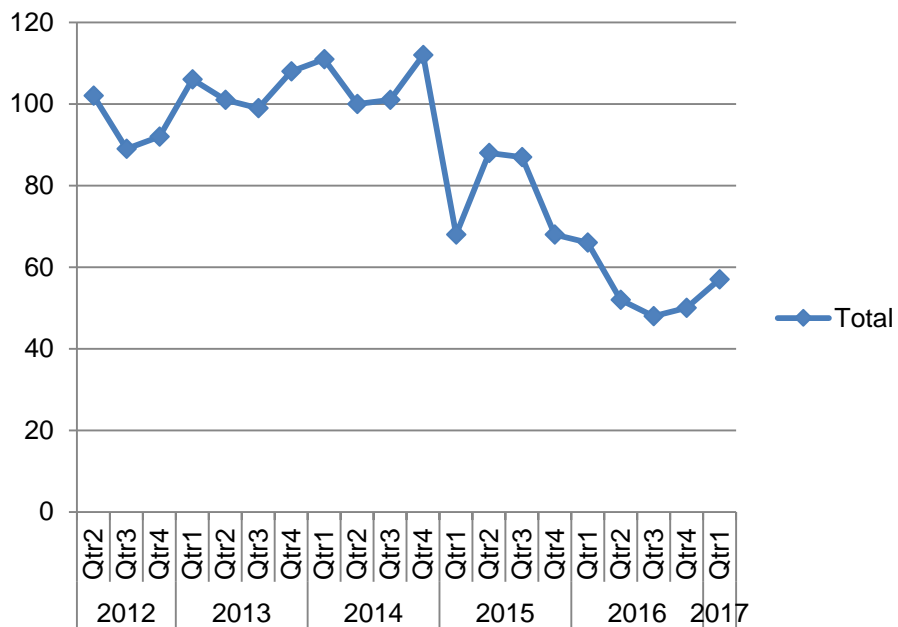
Our journey so far....



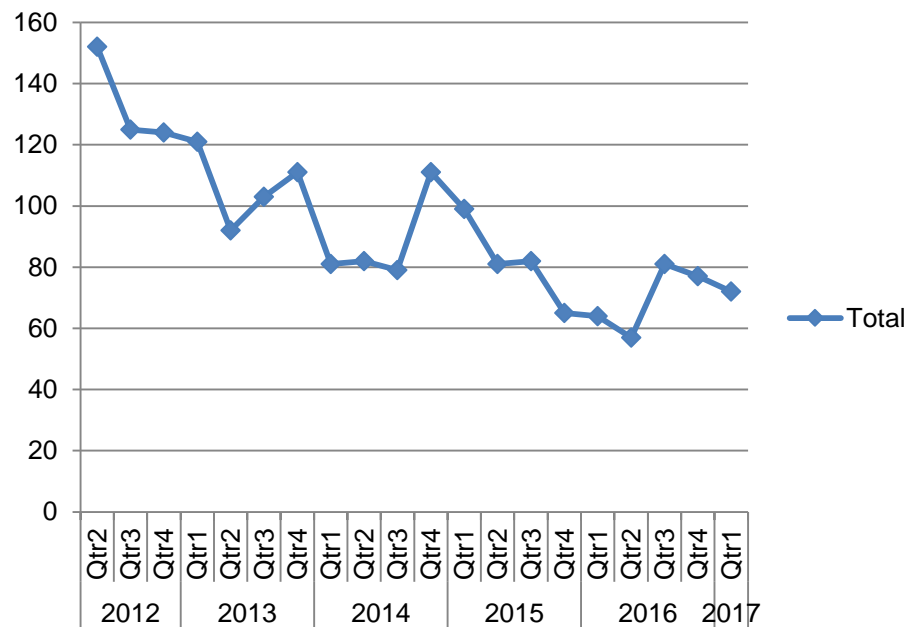


Are we making a difference?

FTEs



Court outcomes





Leeds Safer Schools Officers





Child Friendly Leeds YOS



- ✿ Restorative Practice
 - ✿ Reconnect (FGC)
 - ✿ 'BeSmart'
- ✿ Child Friendly agenda
 - ✿ Youth Panel
 - ✿ Child Friendly Custody Process
 - ✿ ASB partnership
 - ✿ Schools
- ✿ Early intervention





Youth Panels and outcomes

- No Formal Action (NFA)
- Schools option
- Community Resolution
- Youth Caution
- Youth Conditional Caution
- Court

We need to talk about Joe!





Joe's Youth Panels

What was our decision?

Outcome: No Formal Action

Rationale:

- Family had worked with MST before
- Embedded problems within Joe's family and parenting issues.
- Parents focus all blame on Joe
- Joe's behaviour is contained to the household
- Father does not support prosecution
- The panel felt that now Joe was 14 he could be supported to try and build his confidence, ability to socialise and develop his own interests outside the home

Plan:

- Engage with the YOS nurse: Physical & Emotional wellbeing, consider a further referral to CSWS and CAMHS
- Reconnect?.
- Engage with worker to look at managing Joe's emotions, this can include therapeutic work with YOS nurse.
- Referral to YOS Mentor & any constructive activity Joe has interest in.
- Support Joe and family with attending school.





Child Friendly Youth Justice Thank you



PC Matt Guy & PC Chris Marshall
West Yorkshire Police

 @PCMattGuy

